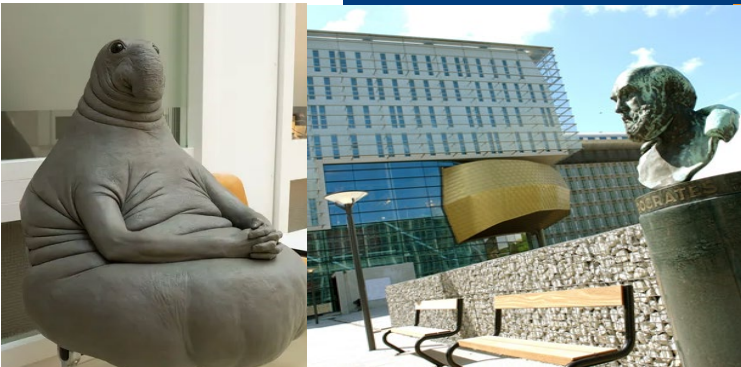




SPONSORSHIP OPPORTUNITIES

EPOS LEIDEN 2025 | 9 – 11 October 2025



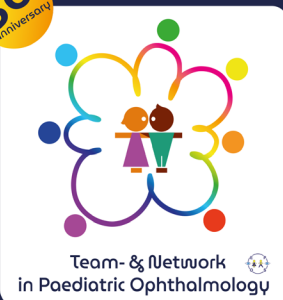
ACCREDITATION

ADAP and EACCME application to be submitted

**50th Annual Meeting
of the**

**European Paediatric
Ophthalmology
Society**

50th
anniversary



EPOS
9-11 October 2025
Leiden, the Netherlands

TARGET AUDIENCE

This annual meeting is intended for (inter)national (paediatric) ophthalmologists, ophthalmogeneticists, paediatricians, researchers, orthoptists, optometrists and other specialists involved in care for paediatric patients.

LOCATION

Burumzaal
Leiden University Medical Center (LUMC)
Leiden, the Netherlands

“Team- and Network in
Paediatric Ophthalmology”

In collaboration with:

Leiden University Medical Center &

**For more information, please contact:
epos2025@lumc.nl**



THE CONFERENCE

Dear Industry partners,

From all over the world, the EPOS conference brings together all those devoted to paediatric ophthalmology to share their knowledge and present new insights in scientific sessions and participate in networking during daily meals and coffee breaks, served in the exhibition area.



The venue of the conference is the spacious Burumazaal at the LUMC, situated next to the main train station and 20 minutes by train from Schiphol Airport.

Leiden is a typical Dutch city with mills, canals and bikes and the oldest Dutch University founded in 1575 by William of Orange. It is called Key City after the 2 keys in the coat of arms.



TEAM- AND NETWORK IN PAEDIATRIC OPHTHALMOLOGY

Team- and network amongst paediatric ophthalmologists, with other subspecialists in ophthalmology or other specialists involved in care for our paediatric patients and with you, our sponsors, who facilitate us to share our knowledge and show us your products and new developments.

WHY SPONSOR EPOS 2025?

Connect with leading researchers, practitioners and clinicians.

You will gain exposure, build relationships, develop partnerships and connect with representatives in the field of clinical and surgical (paediatric) ophthalmology and ophthalmogenetics.

Premium branding and positioning opportunities

You will reach your target audience and will be recognized as a supporter of the conference and its aims. Registration, marketing opportunities and networking are amongst the many benefits associated with sponsoring this conference.

We cordially invite you to participate in EPOS 2025. Your participation will be the key to a successful meeting!

Kind regards,

N. Schaliĳ-Delfos

Prof. dr. Nicoline Schaliĳ-Delfos

COMMITTEES

EPOS BOARD MEMBERS

- G. Darius Hildebrand, FRCS FRCOphth, FEBO, Cantonal Hospital St. Gallen, *President*
- Erika Maka, MD, Semmelweis University, *Secretary*
- Christina Gerth-Kahlert, MD, University Hospital Zürich, *Treasurer*
- Catherine Cassiman, MD, UZ Leuven
- Manca Tekavcic Pompe, MD, PhD, University Eye Clinic
- Asimina Mataftsi, MD, PhD, MRCOphth, Aristotle University of Thessaloniki
- Matthieu P. Robert, MD, PhD, Necker-Enfants Malades University Hospital

LOCAL ORGANISING COMMITTEE

- Prof. Nicoline Schalijs-Delfos, MD, PhD, LUMC, Leiden
- Angela Arends-Tjiam, MD, PhD, Erasmus MC, Rotterdam
- Arlette van Sorge, MD, PhD, Royal Visio, Amsterdam
- Elke Kraal-Biezen, MD, AUMC, Amsterdam
- Mo Al Baaj, MD, LUMC, Leiden





PRELIMINARY PROGRAMME AT A GLANCE

THURSDAY, 9 OCTOBER 2025

17:00 – 20:00	WELCOME RECEPTION & REGISTRATION
---------------	---

FRIDAY, 10 OCTOBER 2025

08:00 – 08:45	Registration
08:30 – 08:45	Opening Ceremony
08:45 – 10:30	Scientific session Team- and network with the geneticist (metabolic, genetic, syndromes, retina)
10:30 – 11:15	COFFEE BREAK, POSTER VIEWING & EXHIBITION
11:15 – 12:45	Scientific session Team- and network for children with craniofacial or orbital diseases
12:45 – 14:00	LUNCH, POSTER VIEWING & EXHIBITION
14:00 – 15:15	Jubilee session: Lectures of Lifetime Achievement Award recipients
15:15 – 16:00	COFFEE BREAK, POSTER VIEWING & EXHIBITION
16:00 – 17:00	Scientific session Team- and network with neurology (paediatric brain tumors)
17:00 – 18:00	Scientific session Team- and network for allergic and inflammatory disorders (allergology, immunology and rheumatology)
18:00	Concluding Remarks / End of first day scientific programme
19:00 – 23:00	<i>GALA DINNER</i> (upon Registration)

SATURDAY, 11 OCTOBER 2025

08:00 – 08:30	REGISTRATION
08:30 – 10:30	Scientific session Team- and network with neonatology & panel discussion 'The best way to treat and follow up on ROP'
10:30 – 11:15	COFFEE BREAK, POSTER VIEWING & EXHIBITION
11:15 – 12:30	Scientific session Team- and network in rehabilitation for the visually impaired
12:30 – 13:00	<i>Assembly of EPOS Members</i>
13:00 – 14:00	LUNCH, POSTER VIEWING & EXHIBITION
14:00 – 15:15	Scientific sessions Paediatric ophthalmology never works Eye-lone (teamwork with other subspecialists in ophthalmology - surgery)
15:15 – 16:00	COFFEE BREAK, POSTER VIEWING & EXHIBITION
16:00 – 16:45	Scientific session Team- and network for diagnostics (from imaging to diagnosis)
16:45 – 17:00	Awards and Closing Ceremony



GENERAL INFORMATION

From all over the world, the EPOS conference brings together all those devoted to paediatric ophthalmology to share their knowledge and present new insights in scientific sessions and participate in networking during daily meals and coffee breaks, served in the exhibition area.

WHO SHOULD ATTEND THIS MEETING

This annual meeting is intended for (inter)national (paediatric) ophthalmologists, ophthalmogeneticists, paediatricians, visual rehabilitation specialists, researchers, orthoptists, optometrists and other specialists involved in care for paediatric patients.

LEARNING OBJECTIVES

Upon completion of this annual meeting, participants will be up-to-date on:

- new developments in paediatric ophthalmology and its allied professions
- standard of care for a large variety of disorders seen in daily practice
- the best approach for surgical and medical interventions in paediatric ophthalmology

ACCREDITATION

An application will be submitted for ADAP and EACCME accreditation.

VENUE

LUMC, Burumazaal (building 3)
Hippocratespad 21
Leiden, the Netherlands

ACCESS

By plane

Schiphol Amsterdam Airport is less than twenty minutes away. Arriving at Schiphol Amsterdam Airport, you can either travel by taxi to the LUMC or take the train from Schiphol to Leiden Central Station. Inside Schiphol Plaza (the arrivals hall) you will find several (yellow) train ticket machines but also ticket desks. The train station itself is situated directly underneath the Schiphol Plaza. A one-way ticket will cost you around € 7,- (you can pay either in cash or by bankcard). You can also buy your ticket in advance on this site:

www.ns.nl/producten/en/losse-kaartjes-toeslagen. Upon arrival at Leiden Central Station, please use exit (Uitgang) LUMC, and you will find the hospital on your left hand side.

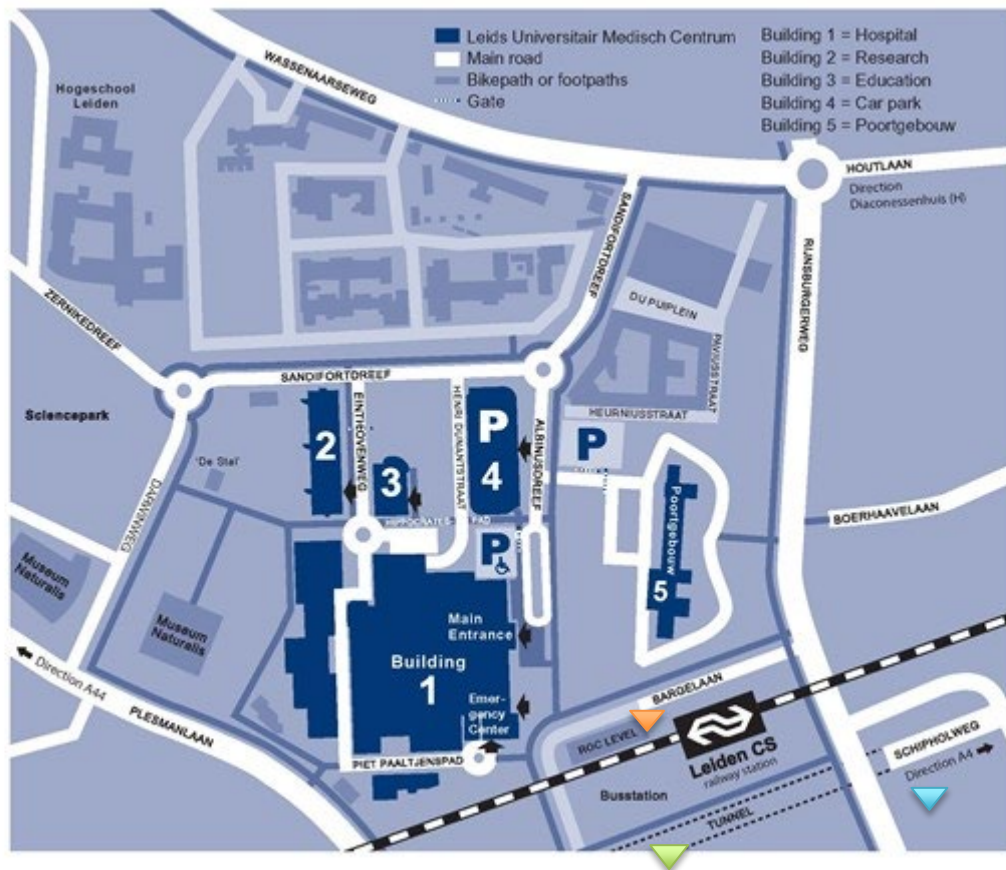
By car

There is a parking garage next to the LUMC (for car navigation systems: the address of the parking is Albinusdreef 3, Leiden). Upon leaving the parking garage, walk to the hospital.

By public transport:

LUMC is located just off the Leiden's Central Station (rail and bus) in within walking distance. All regional buses to Leiden stop at the Central Station in Leiden. Some buses stop in front of the LUMC, at Bargelaan (behind the station). All buses stop at the bus station in front of the station.

VENUE FLOORPLAN LUMC



Building 1 = Hospital
Building 3 = Education (Buruma Hall)

- Fletcher Hotel Leiden
- Golden Tulip Hotel
- Ibis Leiden Center



REGISTRATION FEES AND DEADLINES

	Student (1)	Orthoptist (2)	EPOS Member (3)	Non-Member
Early bird	€ 205	€ 285	€ 350	€ 465
Regular fee	€ 325	€ 400	€ 475	€ 625
Late / on-site fee	€ 400	€ 480	€ 590	€ 700

Registration fees are exclusive of 21% Dutch VAT.

(1) **Student rate** is available for Medical students, PhD-students and clinicians in training during the 2025-2026 academic year, and candidates for the EBO subspecialty exam in strabismus and paediatric ophthalmology 2025. If you register as a student, please upload the proof of your current status (2024-2025 academic year) on the conference management platform (this can be a student card, a registration certificate, or a letter from your supervisor or head of department), Be ready also to present an updated (2025-2026 academic year) proof of status when registering on-site.

(2) **Orthoptist & Other Vision Specialists.**

(3) Please provide your **membership number** when creating your account on our conference management platform. The membership will be verified; if you are not a member, we will have to change your registration fee to the one applying to your status.

ABSTRACT DEADLINES

Abstract submission open	Monday, 17 February 2025
Abstract submission deadline	Thursday, 1 May 2025 (23:59 CET)
Abstract notification	Monday, 30 June 2025

HOTEL ACCOMMODATION

You'll soon find out that one day in Leiden is nowhere near long enough! With all the museums, intimate shopping streets, city tours or a trip through the canals, you'll soon find yourself wanting to stay longer in this lovely city. Make your discovery complete and book an overnight stay in a hotel in one of the nearby hotels, which are easily accessible by bicycle (rental options available at various hotels) or on foot. The following hotels are closely centred around the venue. Amsterdam city, is only 25 minutes away by train.

[Fletcher Wellness-Hotel Leiden](#)
[Hotel Golden Tulip Leiden Centre](#)
[IBIS Leiden Centre](#)

CONTACT

For questions, please reach out to **Boerhaave Continuing Medical Education**.

Linde Rutte-voor 't Hekke and/or Prof. Nicoline Schalijs-Delfos
 Email: epos2025@lumc.nl



SPONSORSHIP OPPORTUNITIES

For this conference the organization will work with sponsor and exhibition packages. Below you will find an overview of the different packages, specifying the benefits per package.

DIAMOND PACKAGE (LIMITED AVAILABILITY)

€6.500 (EXCL. VAT)

- ✓ Exhibition space
 - Two tables or stand 6m2
 - One roll up banner (production via company, proof of fireproof material required)
- ✓ 1 conference registrations included
- ✓ 3 exhibitor badges included
- ✓ Publicity
 - Acknowledgement on conference website
 - Acknowledgement onsite
 - Complimentary corporate (non-branded) bag insert
 - Full page corporate (non-branded) advertisement in the digital programme booklet

GOLD PACKAGE (LIMITED AVAILABILITY)

€5.000 (EXCL. VAT)

- ✓ Exhibition space
 - One table
 - One roll up banner (production via company, proof of fireproof material required)
- ✓ 3 exhibitor badge included
- ✓ Publicity
 - Acknowledgement on conference website
 - Acknowledgement onsite
 - Full page corporate (non-branded) advertisement in the digital programme booklet

SILVER PACKAGE (LIMITED AVAILABILITY)

€2.500 (EXCL. VAT)

- ✓ Exhibition space
 - Table space (max 1,5m)
- ✓ 2 exhibitor badges included
- ✓ Publicity
 - Acknowledgement on conference website
 - Acknowledgement onsite incl. digital programme booklet

BRONZE PACKAGE

€1.500 (EXCL. VAT)

- ✓ 2 exhibitor badge included.
- ✓ Publicity
 - Acknowledgement on conference website
 - Acknowledgement onsite
 - Bag insert (corporate non-branded brochure, flyer etc.)



Presentation Opportunities

LANYARDS

SOLD OUT

Each participant is required to wear a personal name badge with a lanyard as an admission ticket to the conference. Use this important medium as your own personal advertising space and make your lanyards available to the participants.

Production and provision by the sponsor (approx. 400 pieces)

CONGRESS BAGS

€ 10 PER ITEM + BAG PRODUCTION (EXCL. VAT)

Exclusive sponsoring possibility of the conference bags. Your name displayed on each bag.

WRITING MATERIALS

€ 975 (EXCL. VAT)

Presence of your company through company-owned pens and pads for each participant (approx. 600 pieces, provided by the sponsor).

BAG INSERTS, BROCHURES, LEAFLETS, FLYERS, ETC.

€ 500 (EXCL. VAT)

Conference bag insert (corporate non-branded brochure, flyer etc.) up to max. 400 pieces Size max. DIN A4 / max. 8 pages.

ADVERTISEMENT

€ 1.500 (EXCL. VAT)

Corporate non-branded advertisement in the industrial part of the digital programme booklet.

COFFEE BREAK

€ 850 (EXCL. VAT)

The organiser provides coffee and tea for all delegates in one of the coffee breaks. Your company logo as appreciation on signs at the buffet stations.

There is a mixed audience of (non-) prescribers and the sponsor/exhibition area is open to the entire audience. This means that in accordance with Dutch [CGR regulations](#) and [Code of Conduct for Medical Devices](#), you may only use corporate advertising on your sponsor booth. Prescribers and non-prescribers will be identified as such on their conference badges. Advertising for prescription drugs is only permitted in 1-on-1 contacts with prescribers only.

Cancellation

In case of cancellation before 1 June 2025, a refund of 40% will be granted. After this date, the total amount paid will be charged as cancellation fees. Companies participating in the conference are required to take out appropriate insurance by themselves.

Bank details:

Academisch Ziekenhuis Leiden
Albinusdreef 2, 2300 RC Leiden, the Netherlands

IBAN: NL11 DEUT 0451001400 | **BIC/Swift:** DEUTNL2A

Dutch Chamber of Commerce LUMC: 27366422

VAT number: NL003566213B01

PROVISIONAL FLOORPLAN

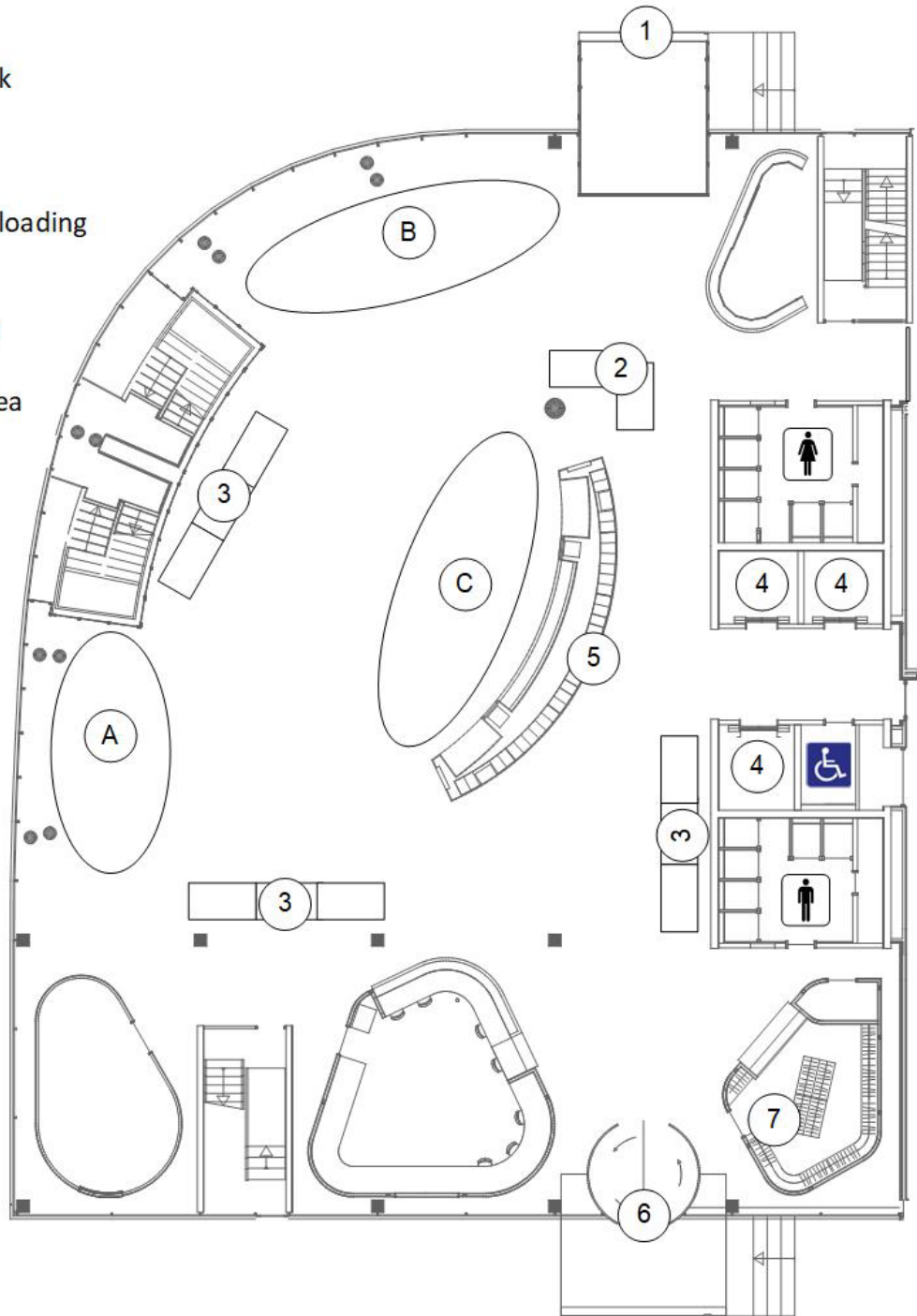
LUMC, educational building

LEGEND

- 1. Entrance
- 2. Registration desk
- 3. Catering
- 4. Elevators
- 5. Lockers
- 6. Back entrance / loading
- 7. Cloakroom

SPONSOR STANDS

A,B,C Sponsor area



GROUND FLOOR



SPONSORSHIP APPLICATION FORM

Name of Company*:

VAT number:

Address:

Postal Code:

City:

(State):

Country:

Tel:

E-mail:

Contact Person:

*This name will be printed on all relevant materials

SPONSOR LEVEL

- Diamond Level | € 6.500,-
- Gold Level | € 5.000,-
- Silver Level | € 2.500,-
- Bronze Level | € 1.500,-

Fees are exclusive of 21% VAT

ADDITIONAL SPONSORSHIP OPPORTUNITIES

- Lanyard for conference badges | € 1.500,- SOLD OUT
- Congress bags | €10 per item + production costs
- Writing materials | € 975,-
- Bag Insert | € 500,-
- Advertisement | € 1.500,-
- Coffee break | € 850,-

Fees are exclusive of 21% VAT

Date:

Name:

Stamp and authorised signature:

Please return this form to: **Boerhaave Continuing Medical Education**

Email: epos2025@lumc.nl